



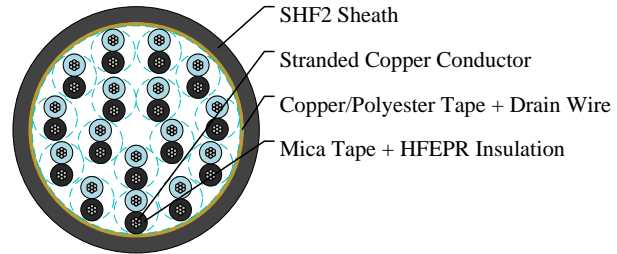
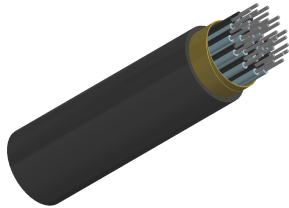
# Caledonian

NEK606 Caledonian Offshore & Marine Cables Fire Resistant Instrumentation Cables

[www.caledonian-cables.com](http://www.caledonian-cables.com)

[marketing@caledonian-cables.com](mailto:marketing@caledonian-cables.com)

## S108 (Formerly S14) BU(c) 250 V



## APPLICATIONS

These unarmoured cables are fire resistant, flame retardant, low smoke and halogen free, used for instrumentation, communication, control and alarm systems.

## STANDARDS

IEC 60092-376  
IEC 60092-360  
IEC 60332-1  
IEC 60332-3-22  
IEC 60754-1,2  
IEC 61034-1,2  
NEK 606:2016  
IEC 60331-21

## VOLTAGE RATING

250V

## CABLE CONSTRUCTION

Conductors: Circular tinned annealed stranded copper wire to IEC 60228 class 2 or class 5.

Insulation: Mica tape + Halogen free EPR compound.

Twinning: Colour coded cores twisted together.

Collective Shielding: Pairs/triples are layed up and collectively screened by copper backed polyester tape in contact with a stranded tinned copper drain wire. Pairs/triples are numbered with numbered tape or by numbers printed directly on the insulated conductors.

Outer Sheath: Halogen free thermosetting compound, SHF2, coloured grey (blue for intrinsically safe).

## MECHANICAL PROPERTIES

Bending Radius: 8×OD (during installation); 6×OD (fixed installed)

Temperature Range: -20°C ~ +90°C

## TECHNICAL CHARACTERISTICS



## Caledonian

### NEK606 Caledonian Offshore & Marine Cables Fire Resistant Instrumentation Cables

[www.caledonian-cables.com](http://www.caledonian-cables.com)

[marketing@caledonian-cables.com](mailto:marketing@caledonian-cables.com)

Nom. Cross-Section Area	Nom. Conductor Diameter	Maximum Resistance @20°C	Mutual Capacitance	Nominal Inductance @ 1KHz	Maximum L/R @ 1KHz
mm <sup>2</sup>	mm	Ohm/km	nF/km	MH/km	μH/Ω
0.75	1.1	26.3	75	0.727	20

#### DIMENSION AND PARAMETERS

Construction No. of elements×No. of cores in element×Cross section	Nominal Insulation Thickness	Nominal Sheath Thickness	Approx. Overall Diameter	Approx. Weight
mm <sup>2</sup>	mm	mm	mm	kg/km
16×2×0.75	0.6	1.6	21.8	690